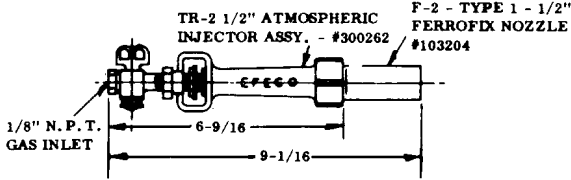
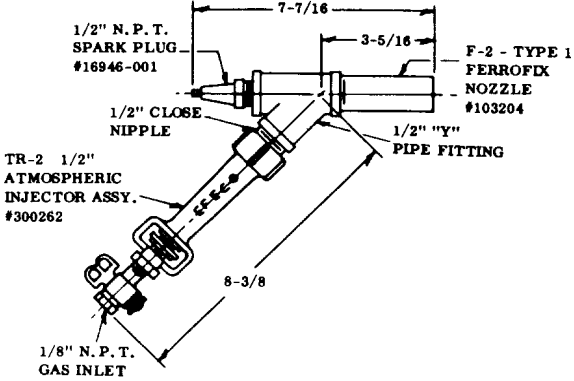
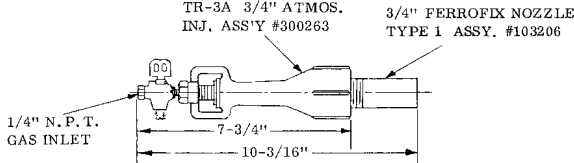
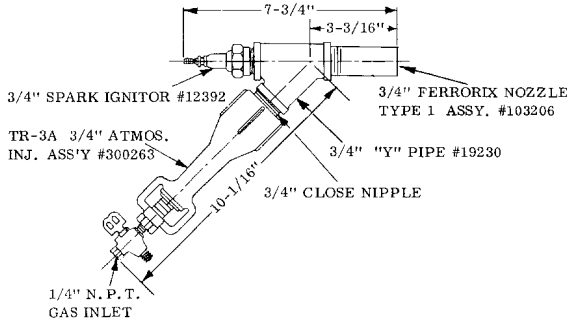




ECLIPSE GAS PILOTS DIMENSIONS AND SPECIFICATIONS

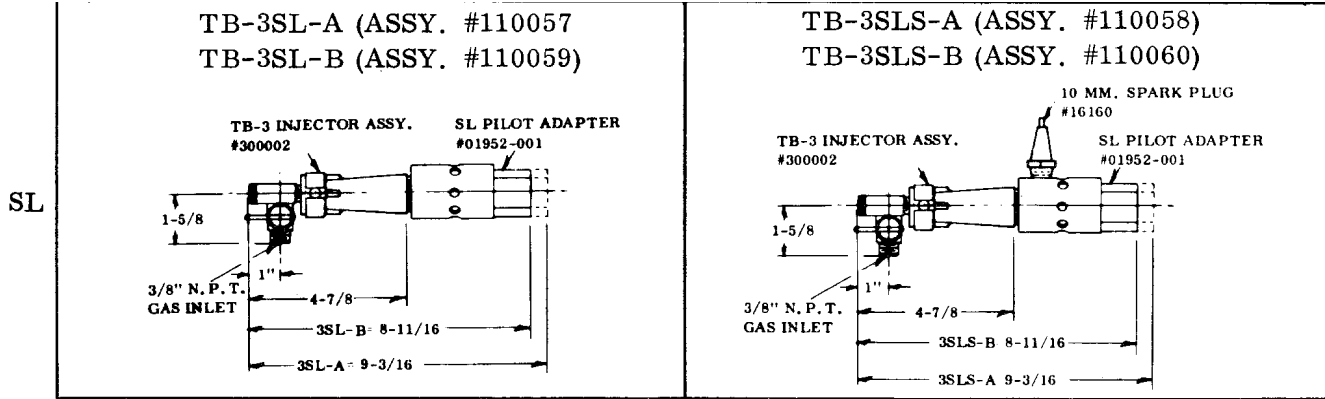
ATMOSPHERIC PILOTS

1/2"

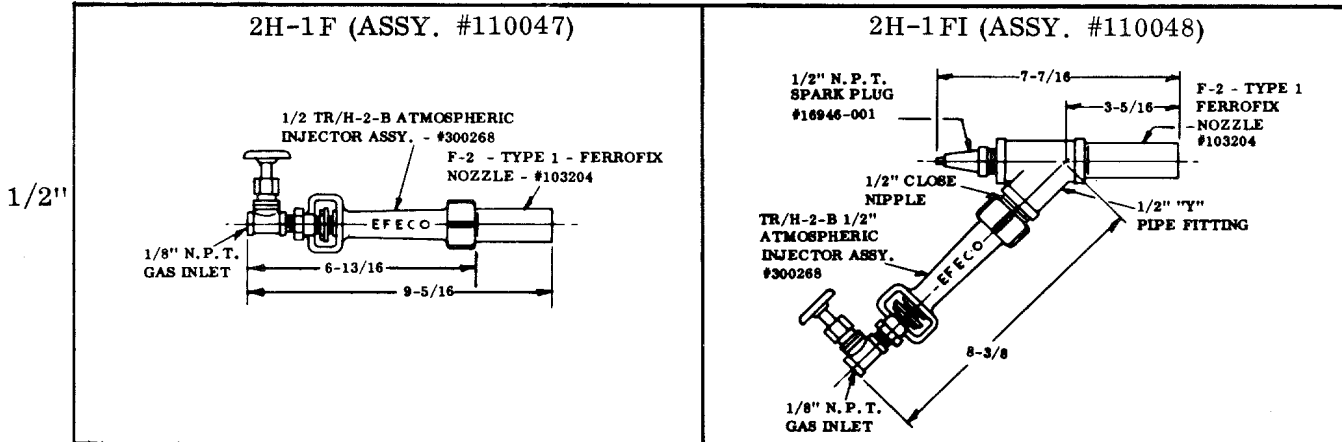
MANUAL IGNITION	ELECTRIC IGNITION
<p data-bbox="456 365 737 392">2A-1F (ASSY. #110039)</p>  <p data-bbox="329 552 894 730"> TR-2 1/2" ATMOSPHERIC INJECTOR ASSY. - #300262 F-2 - TYPE 1 - 1/2" FERROFIX NOZZLE #103204 1/8" N.P.T. GAS INLET 6-9/16" 9-1/16" </p>	<p data-bbox="1065 365 1401 434">2A-1FI (ASSY. #110040)</p>  <p data-bbox="943 453 1511 831"> 1/2" N.P.T. SPARK PLUG #16946-001 7-7/16" 3-5/16" F-2 - TYPE 1 FERROFIX NOZZLE #103204 1/2" CLOSE NIPPLE 1/2" "Y" PIPE FITTING TR-2 1/2" ATMOSPHERIC INJECTOR ASSY. #300262 8-3/8" 1/8" N.P.T. GAS INLET </p>
<p data-bbox="440 863 764 890">3A-1F (ASSY. #110041)</p>  <p data-bbox="305 989 873 1150"> TR-3A 3/4" ATMOS. INJ. ASSY #300263 3/4" FERROFIX NOZZLE TYPE 1 ASSY. #103206 1/4" N.P.T. GAS INLET 7-3/4" 10-3/16" </p>	<p data-bbox="1065 863 1401 890">3A-1FI (ASSY. #110042)</p>  <p data-bbox="976 936 1539 1255"> 7-3/4" 3-3/16" 3/4" SPARK IGNITOR #12392 3/4" FERROFIX NOZZLE TYPE 1 ASSY. #103206 TR-3A 3/4" ATMOS. INJ. ASSY #300263 3/4" "Y" PIPE #19230 3/4" CLOSE NIPPLE 10-1/16" 1/4" N.P.T. GAS INLET </p>

3/4"

ATMOSPHERIC PILOTS (CONT'D.)



HIGH PRESSURE PILOTS



HIGH PRESSURE PILOTS (CONT'D.)

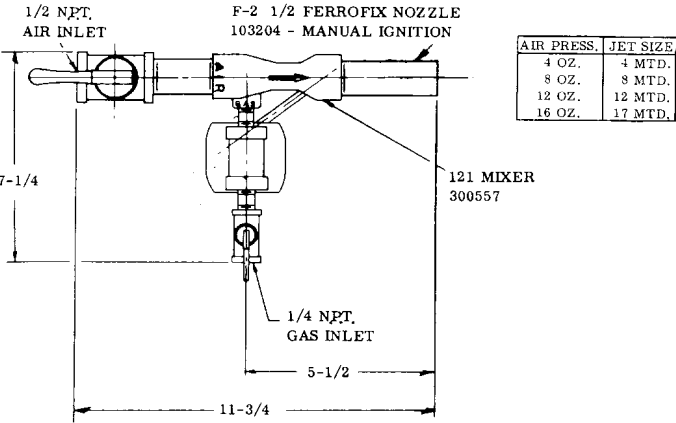
	MANUAL IGNITION	ELECTRIC IGNITION
1"		4H-CEI (ASSY. #110052)
3/4"	3H-3FL (ASSY. #110018) 	3H-3FS (ASSY. #110017)
1"	4H-3FL (ASSY. #110021) 	4H-3FS (ASSY. #110019)
SL	3H-3FSL-A (ASSY. #110053) 3H-3FSL-B (ASSY. #110055) 	3H-3FSLS-A (ASSY. #110054) 3H-3FSLS-B (ASSY. #110056)

BLAST PILOTS

MANUAL IGNITION

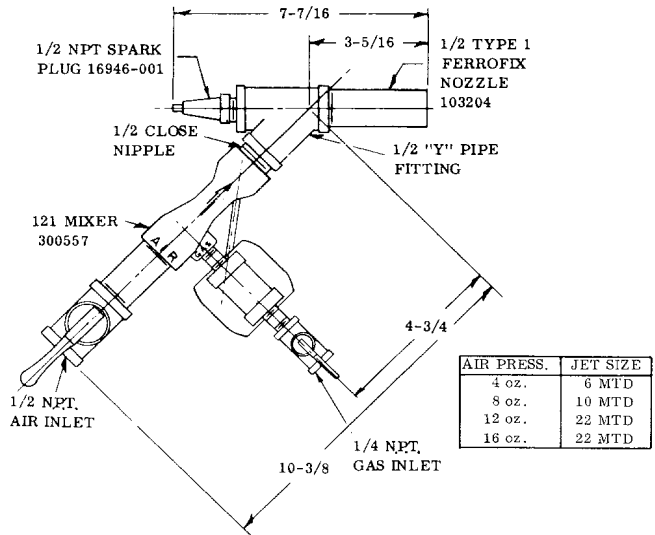
2B-1F (ASSY. #110023)

1/2"



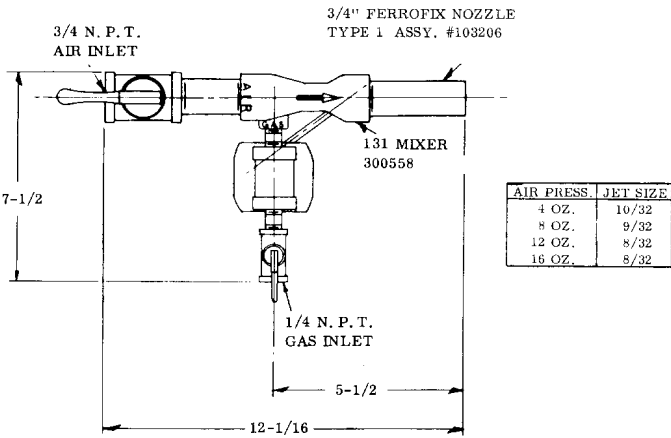
ELECTRIC IGNITION

2B-1FI (ASSY. #110024)

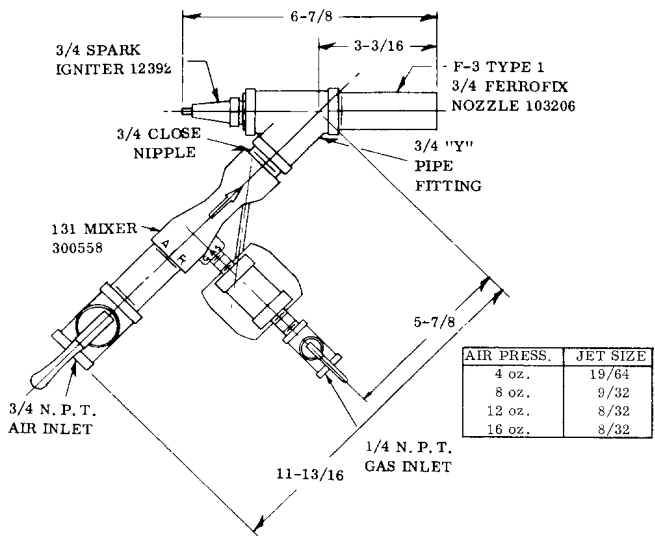


3B-1F (ASSY. #110025)

3/4"



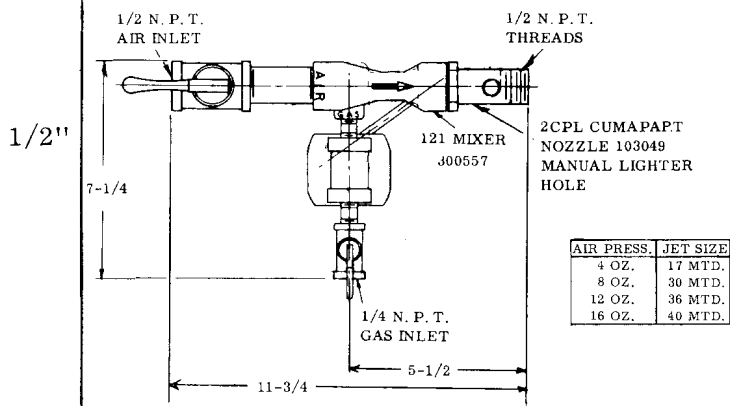
3B-1FI (ASSY. #110026)



BLAST PILOTS (CONT'D.)

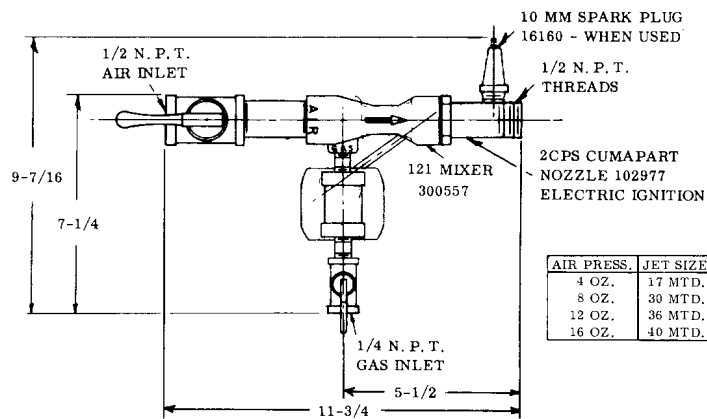
MANUAL IGNITION

2B-CPL (ASSY. #110004)



ELECTRIC IGNITION

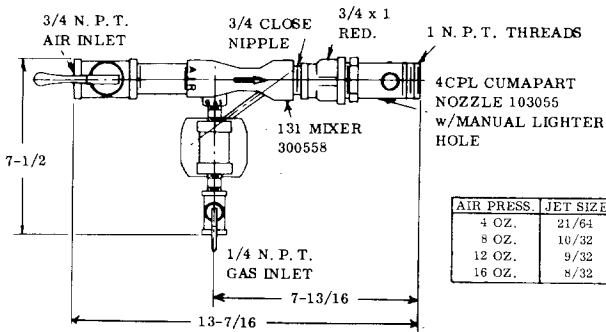
2B-CPS (ASSY. #110002)



BLAST PILOTS (CONT'D.)

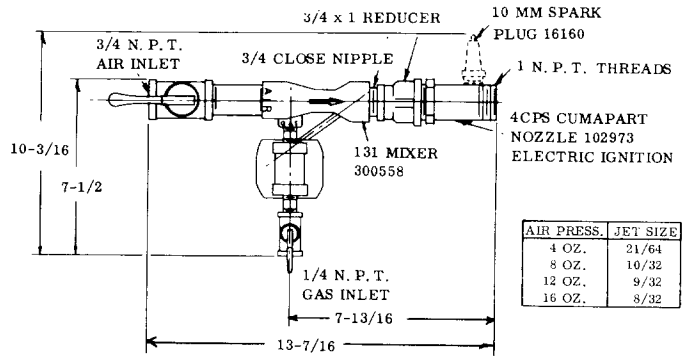
MANUAL IGNITION

4B-CPL (ASSY. #110014)



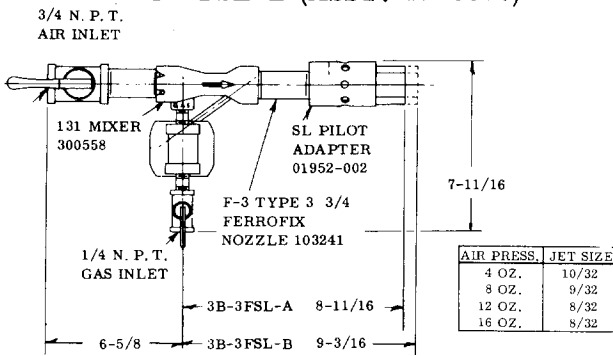
ELECTRIC IGNITION

4B-CPS (ASSY. #110013)



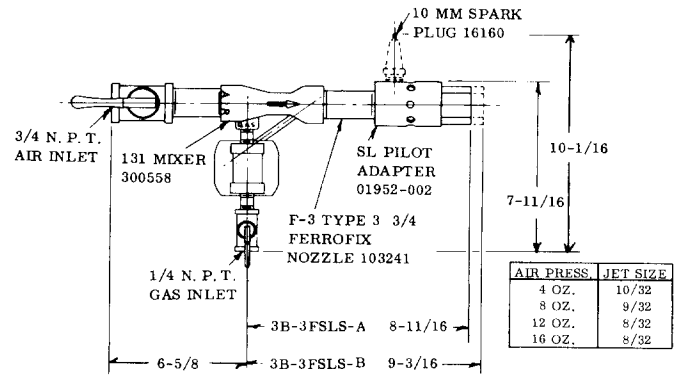
3B-3FSL-A (ASSY. #110035)

3B-3FSL-B (ASSY. #110037)



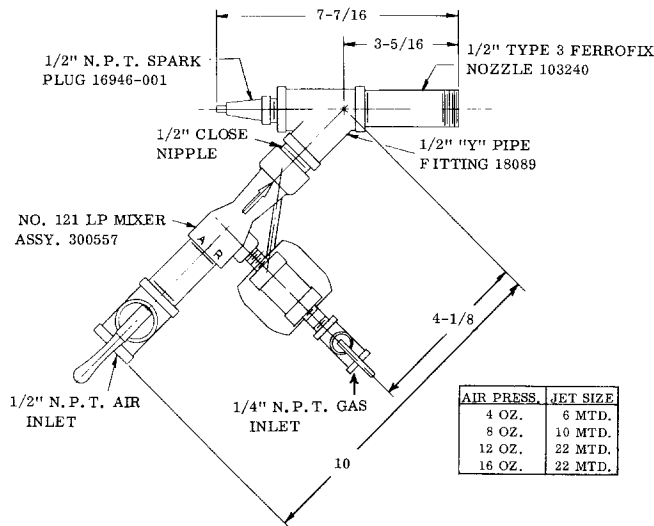
3B-3FSLS-A (ASSY. #110036)

3B-3FSLS-B (ASSY. #110038)



INTERNAL SPARK IGNITION

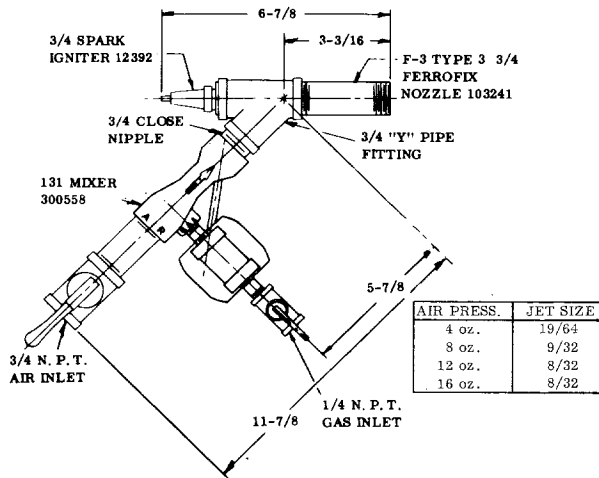
2B-3FI (ASSY. #110064)



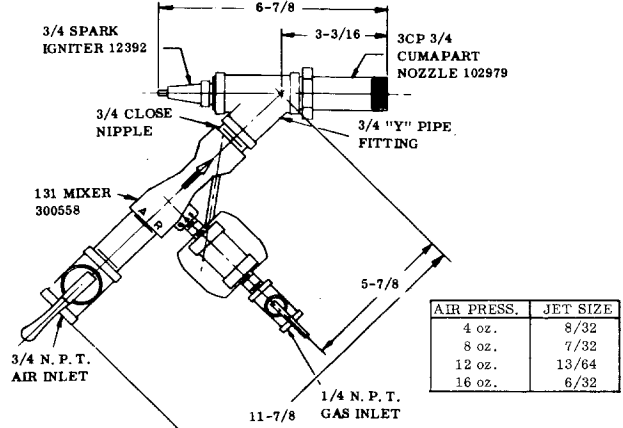
BLAST PILOTS (CONT'D.)

INTERNAL SPARK IGNITION

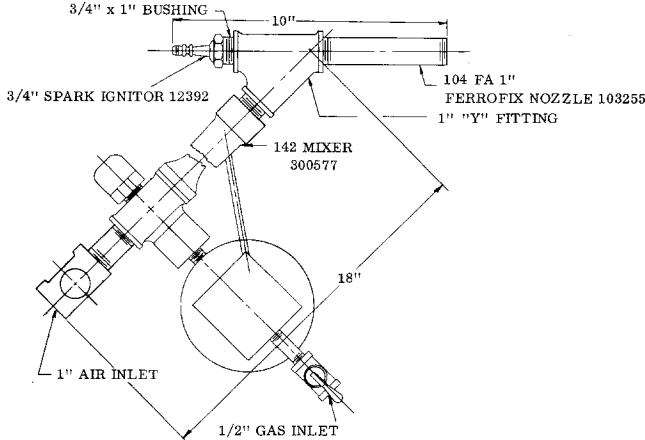
3B-3FI (ASSY. #110065)



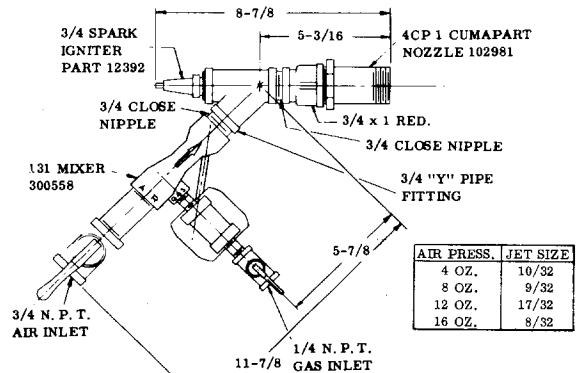
3B-CPI (ASSY. #110063)



4B-3FI (ASSY. # 110061)

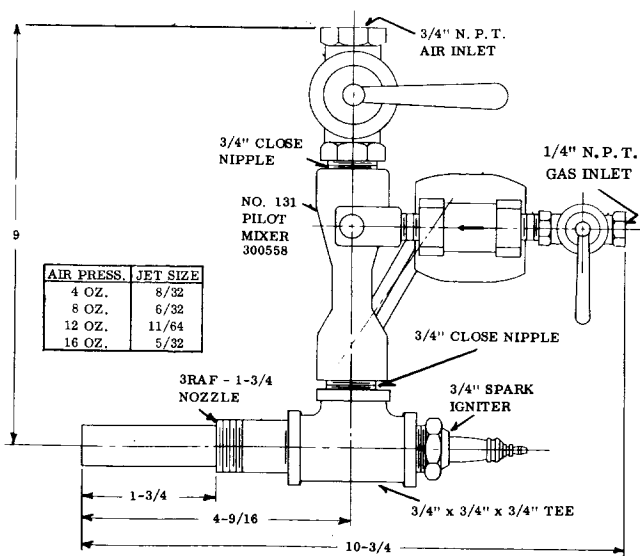


4B-CPI (ASSY. #110062)

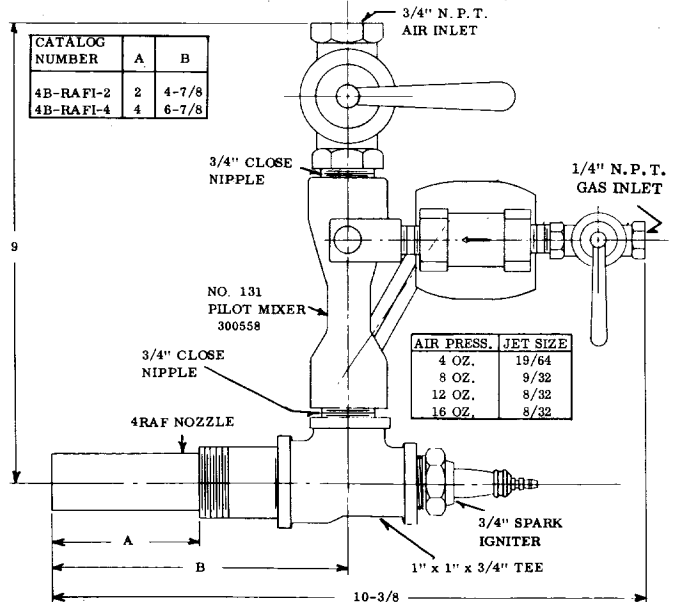


RECESSED PILOTS — (INTERNAL SPARK)

3B-RAFI-1-3/4 (ASSY. #103430)



4B-RAFI-2 (ASSY. #103431)
4B-RAFI-4 (ASSY. #103433)



3/4"

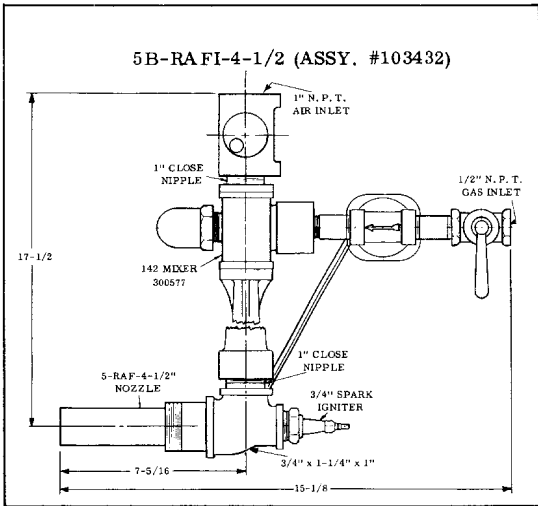
1"

3/4"
and 1"

BLAST PILOTS (CONT'D) — RECESSED PILOTS

1-1/4"

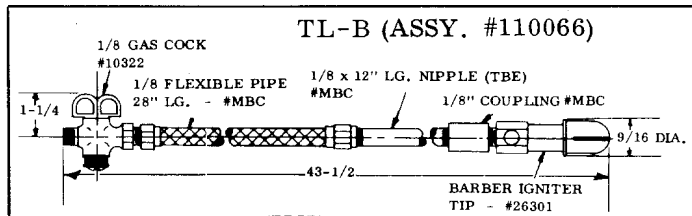
INTERNAL SPARK



PART NUMBERS AND SIZES OF AIR JETS FOR BLAST PILOTS

131 MIXERS				121 MIXERS			
PART NUMBER	SIZE DIA. (")	PART NUMBER	SIZE DIA. (")	PART NUMBER	SIZE	PART NUMBER	SIZE
10254-1	4/32	10254-8	13/64	14520-1	#46 MTD	14520-10	# 1 Drill
10254-2	5/32	10254-9	15/64	14520-2	#42 MTD	14520-11	# 4 MTD
10254-3	6/32	10254-10	17/64	14520-3	#36 MTD	14520-12	# 6 MTD
10254-4	7/32	10254-11	19/64	14520-4	#34 MTD	14520-13	# 8 MTD
10254-5	8/32	10254-14	11/64	14520-5	#25 MTD	14520-14	#10 MTD
10254-6	9/32	10254-15	21/64	14520-6	#22 MTD	14520-15	#17 MTD
10254-7	10/32	---	---	14520-7	#18 MTD	14520-16	#30 MTD
				14520-8	#12 MTD	14520-17	#40 MTD
				14520-9	7/31 Drill	---	---

MANUAL LIGHTER TORCH



Eclipse Combustion

Litho in U.S.A.



Offered By:

Power Equipment Company
2011 Williamsburg Road
Richmond, Virginia 23231
Phone (804) 236-3800
Fax (804) 236-3882

www.peconet.com